

TAXING UNIT: 10,66

SECTION 4, T.6N., R.1W., S.L.B. & M.

IN NORTH OGDEN CITY

SCALE 1" = 100'

SEE P. 3-1

ALSO SEE P. 3-3,4

3-2

SE 1/4 OF NE 1/4 OF

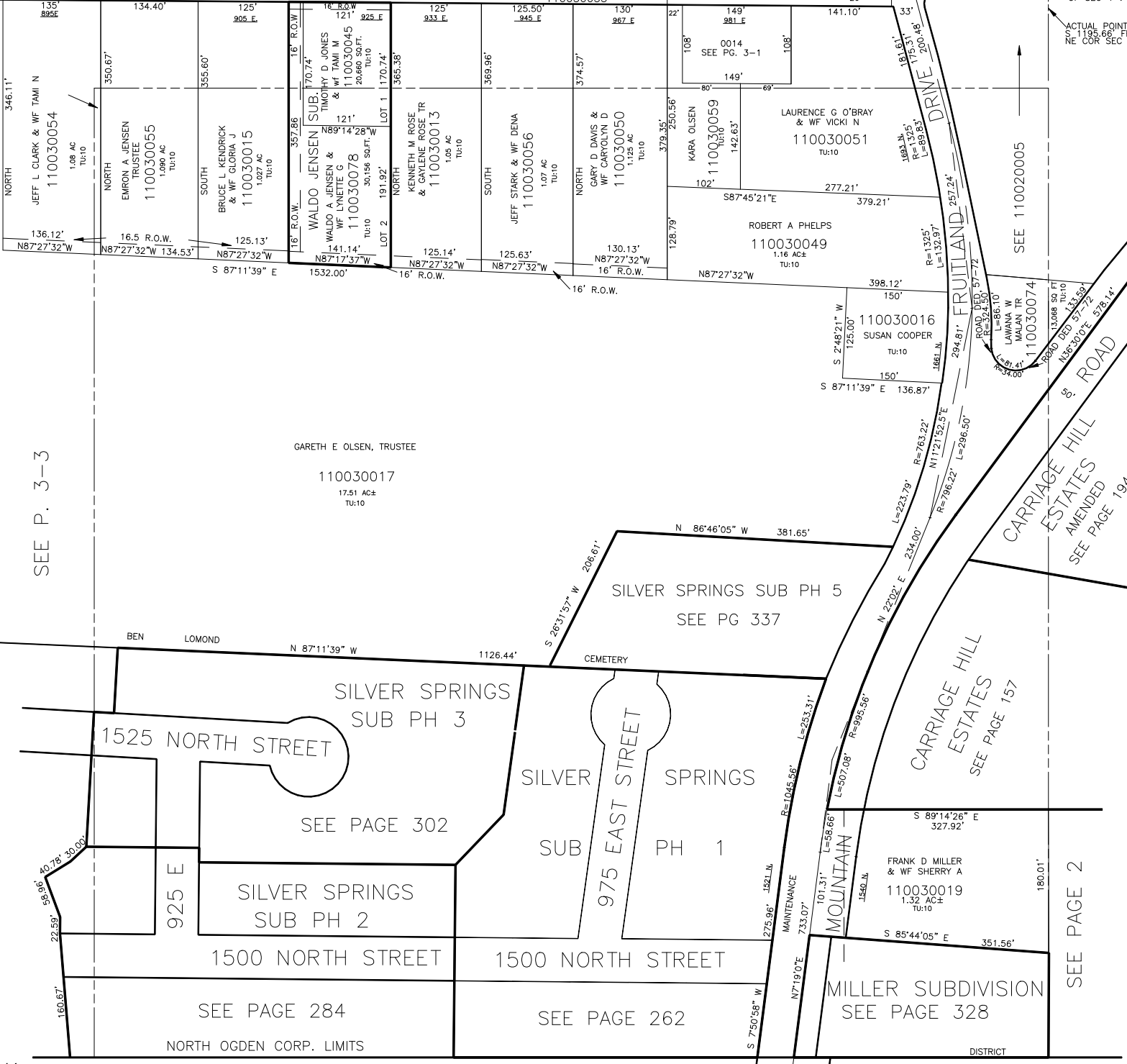
1700 NORTH STREET

WEBER COUNTY 110030033

(N89°14'28"W)\*

542.12'

ACTUAL POINT S 1195.66' FR NE COR SEC 4



SEE P. 3-3

GARETH E OLSEN, TRUSTEE  
110030017  
17.51 AC±  
TU:10

SILVER SPRINGS SUB PH 5  
SEE PG 337

SILVER SPRINGS SUB PH 3  
1525 NORTH STREET

SEE PAGE 302

SILVER SPRINGS SUB PH 2  
1500 NORTH STREET

SEE PAGE 284

SILVER SPRINGS SUB PH 1  
975 EAST STREET

SEE PAGE 262

CARRIAGE HILL ESTATES  
SEE PAGE 157

FRANK D MILLER & Wf SHERRY A  
110030019  
1.32 AC±  
TU:10

MILLER SUBDIVISION  
SEE PAGE 328

SEE PAGE 2